

# Residential Textiles, Student Starter Packs and Window Coverings Framework - FFE3177 NW



The agreement runs from the 1st March 2022 until 29th February 2024 with the option to extend for two further one year periods until 28th February 2026

This framework is split into 5 lots and is available to Members of NWUPC, APUC, CPC, HEPCW, LUPC, NEUPC and SUPC

## Scope of the framework:

The Residential Textiles, Student Starter Packs and Window Coverings Framework has been divided into the following lots;

- Lot 1: Bedding and Bathroom Textiles and Associated Student Accommodation Products
- Lot 2: Kitchen Starter Packs and Associated Kitchenware
- Lots 3-5 Window Coverings (Regional Coverage)

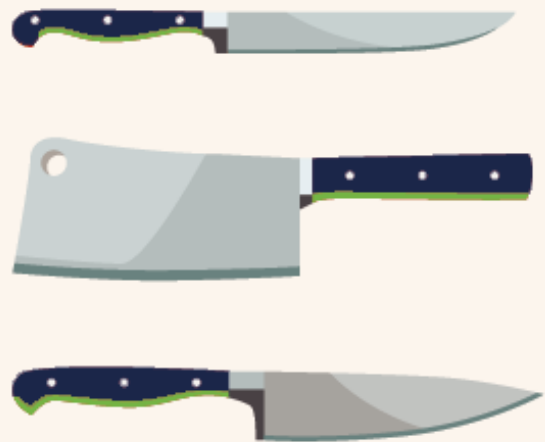
## What are the framework benefits?

- More advantageous pricing based on economies of scale from aggregated spend, with no price increases considered prior to 28th February 2023.
- A detailed Specification of Requirements is provided covering relevant standards and labelling requirements.
- The call-off Terms and Conditions have been established at framework.
- Reduced administrative effort and associated cost savings.
- Direct sales to students are expressly incorporated with a dedicated set of terms and conditions to support such arrangements.
- The ability to request bespoke/customised prints; and the ability to tailor starter packs to meet institutional requirements.
- Access to products with recognised certifications such as the SKA Rating Product Compliance Label or STANDARD 100 by OEKO-TEX®.
- Contract management initiatives around supply chain traceability for high-risk products, and packaging initiatives to support the move away from single use packaging .

# Lot 1: Bedding and Bathroom Textiles and Associated Student Accommodation Products

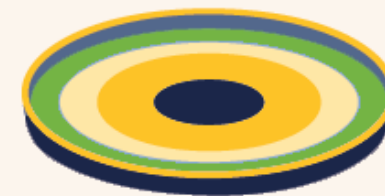
This lot will provide a compliant route for bedding and bathroom textiles for use predominantly in student residential accommodation & conferencing settings. Suppliers will be required, on a national basis, to supply, the following in a variety of fabrics and sizes: Bedding Textiles not limited to bedlinen & bedding packs; duvets, pillows, mattress and bedding protectors, blankets. Bathroom Textiles including towels, face cloths, bathmats, and shower curtains; along with other associated accommodation products. This list is not exhaustive. This lot also covers the supply of products with customisable/ bespoke prints on a non-mandatory basis.





## Lot 2: Kitchen Starter Packs and Associated Kitchenware

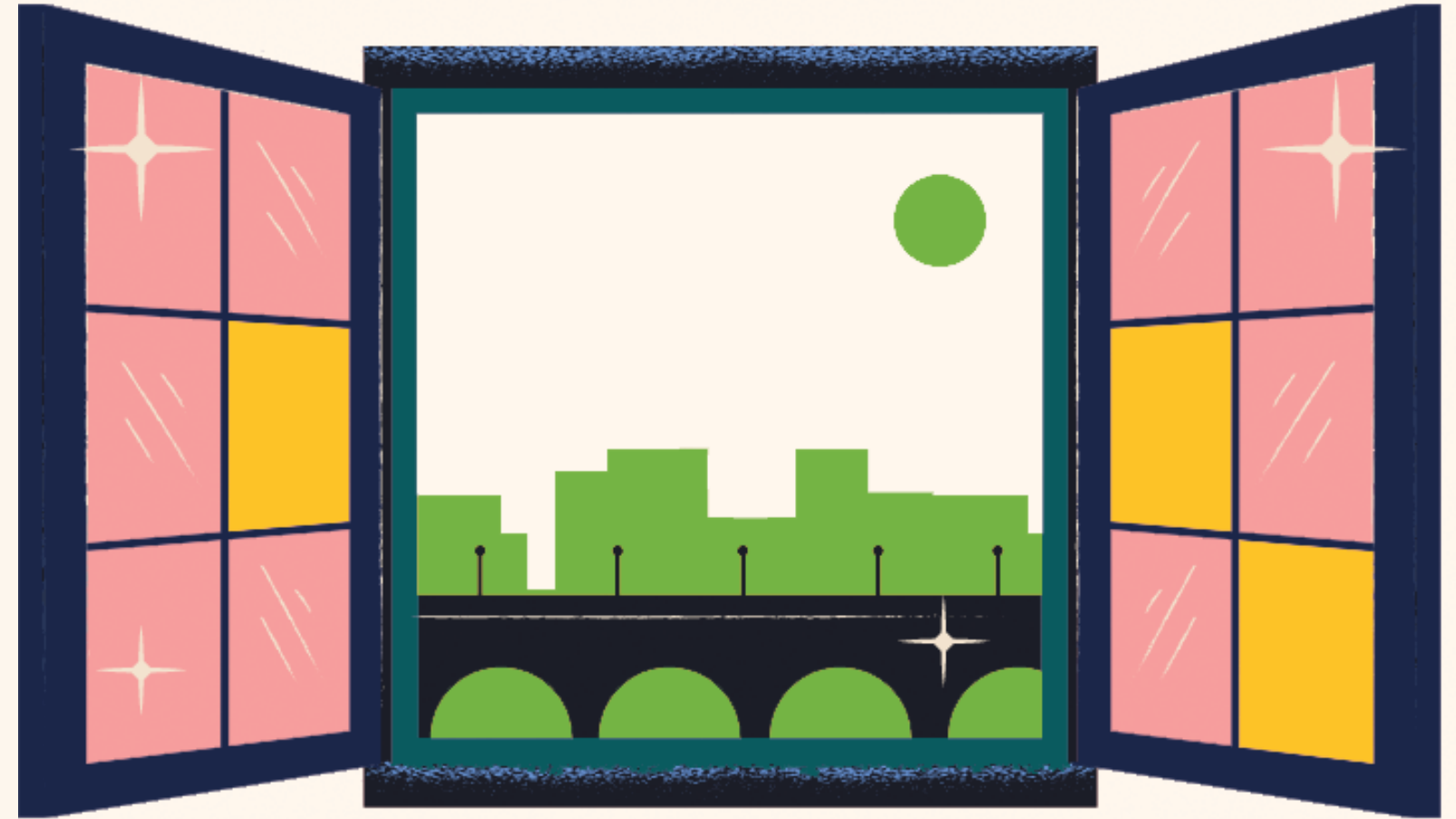
This lot will provide a compliant route for kitchen starter packs and associated kitchenware for use predominantly in student residential accommodation & conferencing settings. Suppliers will be required, on a national basis, to supply, the following items both in packs & individually: cooking aids including but not limited to pans, boards, sheets, glassware, stoneware, ceramicware, knives, utensils. and storage. Diningware including but not limited to cutlery, crockery, glass, and plastic tableware. Kitchen linen. This list is not exhaustive.



## **Lots 3-5: Window Coverings (Regional Coverage)**

This lot will provide a compliant route for supply only and supply & installation of a range of curtains and blinds including but not limited to manual and electric roller, venetian, & vertical blinds in a range of fabrics and materials; black out, dim out, lined & non-lined curtains in a range of fabrics; and window films.

Products will be provided in both occupied and unoccupied areas of a member institution's estate including but not limited to student, residential and commercial accommodation, teaching areas including lecture theatres, bathrooms, offices, storerooms, reception areas, corridors, and stairways. Installations may be required in buildings of historical interest or listings.



# Suppliers on this Framework:

## Lot 1

### Bedding and Bathroom Textiles and Associated Student Accommodation Products

Thomas Kneale and Co  
Gailarde Limited  
Noahs Box Ltd  
Dark Blue International

## Lot 2

### Kitchen Starter Packs and Associated Kitchenware

Student Essentials  
Thomas Kneale and Co  
Noahs Box Ltd

## Lot 3

### Window Coverings Scotland

Skopos Fabrics Ltd  
Milly Contract Furnishings Limited  
Thomas Kneale and Co

## Lot 4

### Window Coverings Northern Ireland

Skopos Fabrics Ltd  
Milly Contract Furnishings Limited  
Thomas Kneale and Co  
Herbert Parkinson Ltd  
Bridge Contract Interiors  
Gailarde Limited

## Lot 5

### Window Coverings England and Wales

Skopos Fabrics Ltd  
Milly Contract Furnishings Limited  
The Custom Group Ltd  
Thomas Kneale and Co  
Herbert Parkinson Ltd  
Bridge Contract Interiors

**Further information on this agreement including supplier contact details can be found in a detailed User Guide which is available on [HE Contracts](#).**

**For further questions or enquiries contact [Matthew Porter](#), NWUPC's Domestic and Furniture Category Manager or call on 0161 234 8013.**

